



.63 Dellfield Crescent , UB8 2EU

£2,384 Per Calendar Month

****STUDENTS****

4 BEDROOMS - AVAILABLE 26/08/2026

The rental payments equate to approx £596 per person per month or £138 per person per week excluding bills. UniHomes offer a bills package for £26 per person per week. (Incl Gas, Electric, Water, TV licence and internet) which can be organised through Nupad initially.

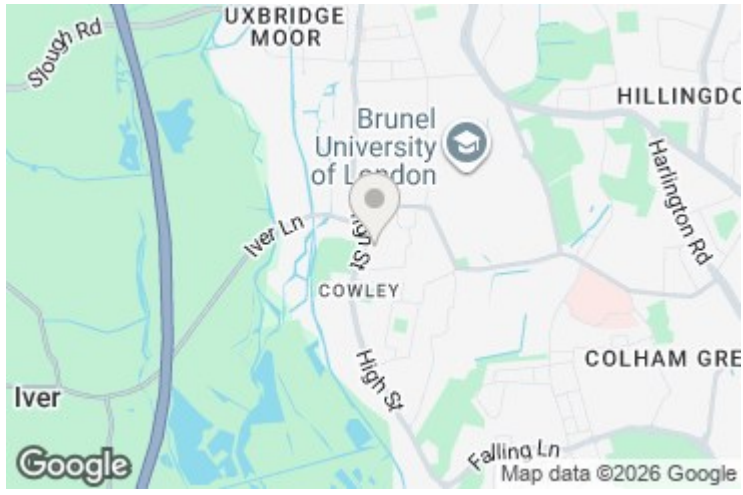
COUNCIL TAX BAND E

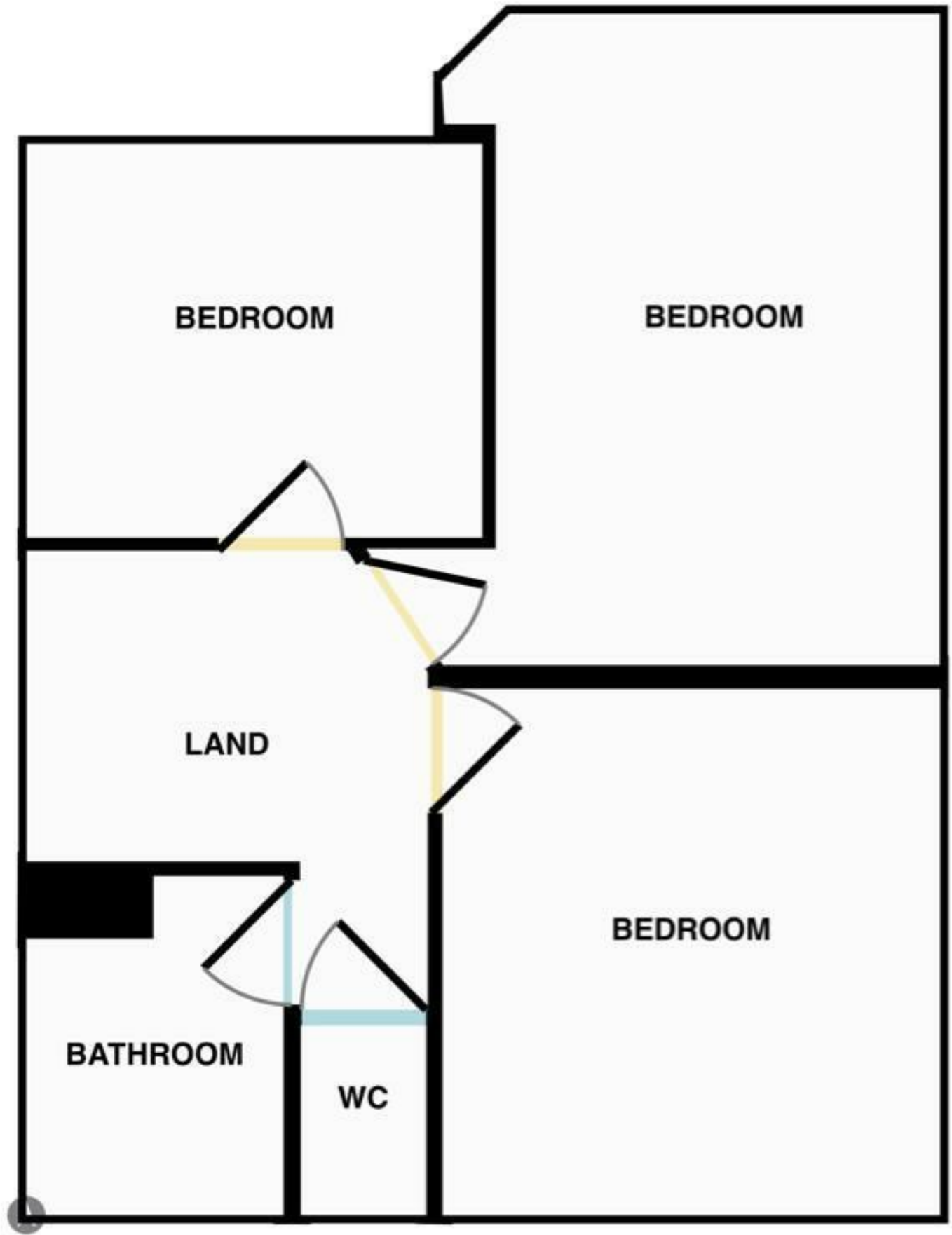
EPC D

Nupad offer this excellent FOUR-bedroom house comprising of FOUR FURNISHED BEDROOMS , a LOUNGE, BATHROOM with separate WC AND KITCHEN facilities. Outside there is off street PARKING and rear GARDEN.

The property is ideal for students at Brunel University. It is also nearby to direct bus routes to Uxbridge Town Centre, Heathrow, Stockley Park and the local underground station, which provides further access to Central London.

.63 Dellfield Crescent, UB8 2EU





Energy Efficiency Rating	
	Potential
Very energy efficient - lower running costs	
(92 plus) A	
(81-91) B	
(69-80) C	
(55-68) D	
(39-54) E	
(21-38) F	
(1-20) G	
Not energy efficient - higher running costs	
Current: 56	Potential: 84
EU Directive 2002/91/EC	

Environmental Impact (CO ₂) Rating	
	Potential
Very environmentally friendly - lower CO ₂ emissions	
(92 plus) A	
(81-91) B	
(69-80) C	
(55-68) D	
(39-54) E	
(21-38) F	
(1-20) G	
Not environmentally friendly - higher CO ₂ emissions	
Current: 53	Potential: 84
EU Directive 2002/91/EC	